

# Welcome to the AccessibilityOnline Webinar Series



A collaborative program between the  
ADA National Network and the  
U.S. Access Board



**The Session is Scheduled to begin at 2:30pm Eastern Time**  
**We will be testing sound quality periodically**

**Audio and Visual are provided through the on-line webinar system. This session is closed captioned.** Individuals may also listen via telephone by dialing 1-712-432-3100 code 930098 (This is **not** a Toll Free number)

The content and materials of this training are property of the US Access Board and the Great Lakes ADA Center and cannot be used and/or distributed without permission. This program is funded through a contract agreement with the U.S. Access Board. For permission to use training content or obtain copies of materials used as part of this program please contact us by email at [adata@adagreatlakes.org](mailto:adata@adagreatlakes.org) or toll free (877)232-1990 (V/TTY)

[www.AccessibilityOnline.org](http://www.AccessibilityOnline.org)

1



## Listening to the Webinar



- The audio for today's webinar is being broadcast through your computer. Please make sure your speakers are turned on or your headphones are plugged in.
- You can control the audio broadcast via the Audio & Video panel. You can adjust the sound by "sliding" the sound bar left or right.
- If you are having sound quality problems check your audio controls by going through the Audio Wizard which is accessed by selecting the microphone icon on the Audio & Video panel



2



## Listening to the Webinar, *continued*

If you do not have sound capabilities on your computer or prefer to listen by phone, dial:

**1-712-432-3100**

**Pass Code:**  
930098

This is **not** a Toll Free number

3



## Listening to the Webinar, *continued*

**MOBILE Users (iPhone, iPad, or Android device and Kindle Fire HD)**

Individuals may listen\*\* to the session using the Blackboard Collaborate Mobile App (Available Free from the Apple Store, Google Play or Amazon )




\*\*Closed Captioning is not visible via the Mobile App and limited accessibility for screen reader/Voiceover users

4



## Captioning

- Real-time captioning is provided during this webinar.
- The caption screen can be accessed by choosing the  icon in the Audio & Video panel. ↓



- Once selected you will have the option to resize the captioning window, change the font size and save the transcript.

5



## Submitting Questions

- You may type and submit questions in the Chat Area Text Box or press **Control-M** and enter text in the Chat Area
- If you are connected via a mobile device you may submit questions in the chat area within the App
- If you are listening by phone and not logged in to the webinar, you may ask questions by emailing them to [webinars@accessibilityonline.org](mailto:webinars@accessibilityonline.org)



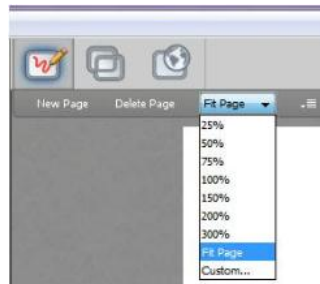
**Please note:** This webinar is being recorded and can be accessed on the AccessibilityOnline website at [www.accessibilityonline.org/Archives](http://www.accessibilityonline.org/Archives) within 24 hours after the conclusion of the session.

6



## Customize Your View


- Resize the Whiteboard where the Presentation slides are shown to make it smaller or larger by choosing from the drop down menu located above and to the left of the whiteboard. The default is “fit page”



7



## Customize Your View *continued*

- Resize/Reposition the Chat, Participant and Audio & Video panels by “detaching” and using your mouse to reposition or “stretch/shrink”. Each panel may be detached using the  icon in the upper right corner of each panel.

8

## Setting Preferences

- Depending on your system settings you may receive visual and audible notifications when individuals enter/leave the webinar room or when other actions are taken by participants. This can be distracting.
- To turn off notifications (audible/visual)
  - Select “Edit” from the tool bar at the top of your screen
  - From the drop down menu select “Preferences”
  - Scroll down to “General”
    - select “Audible Notifications” Uncheck anything you don’t want to receive and “apply”
    - Select “Visual Notifications” Uncheck anything you don’t want to receive and “apply”
  - For Screen Reader User – Set preferences through the setting options within the Activity Window (Ctrl+slash opens the activity window)

9



## Technical Assistance



- If you experience any technical difficulties during the webinar:
  1. Send a private chat message to the host by double clicking “Great Lakes ADA” in the participant list. A tab titled “Great Lakes ADA” will appear in the chat panel. Type your comment in the text box and “enter” (Keyboard - F6, Arrow up or down to locate “Great Lakes ADA” and select to send a message ); or
  2. Email [webinars@accessibilityonline.org](mailto:webinars@accessibilityonline.org) ; or
  3. Call 877-232-1990 (V/TTY)

10

# Accessible Assembly Areas

11



## Presenters



**Mary Adams**  
Architect  
U.S. Department  
of Justice



**Rex Pace**  
Accessibility  
Specialist  
U.S. Access Board



**Diane Perry**  
Architect  
U.S. Department  
of Justice

12

# Session Agenda

- Accessibility Standards
- Assistive Listening Systems
- Accessible Routes
- Wheelchair Spaces
  - Size and Location
  - Companion Seating
  - Integration and Dispersion

13

# Accessibility Standards

14

## Laws Requiring Accessibility

- **Americans with Disabilities Act (ADA)**
- **Architectural Barriers Act (ABA)**
- **Rehabilitation Act**

15

## ADA Standards for Accessible Design



**DOJ Issued  
2010 ADA  
Standards**

**Based on Board's  
ADA-ABA  
Guidelines (2004)**



16



## Key 2010 ADA Standards Sections

**35.151(g) Assembly Areas**  
(Title II Facilities)

**36.406(f) Assembly Areas**  
(Title III Facilities)

**2004 ADAAG:**

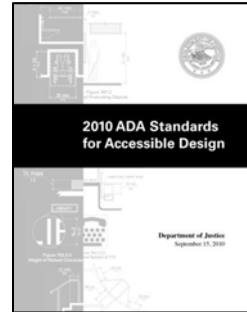
**206 Accessible Routes**

**219 Assistive Listening Systems**

**221 Assembly Areas**

**706 Assistive Listening Systems**

**802 Wheelchair Spaces, Companion Seats,  
Designated Aisle Seats**



17

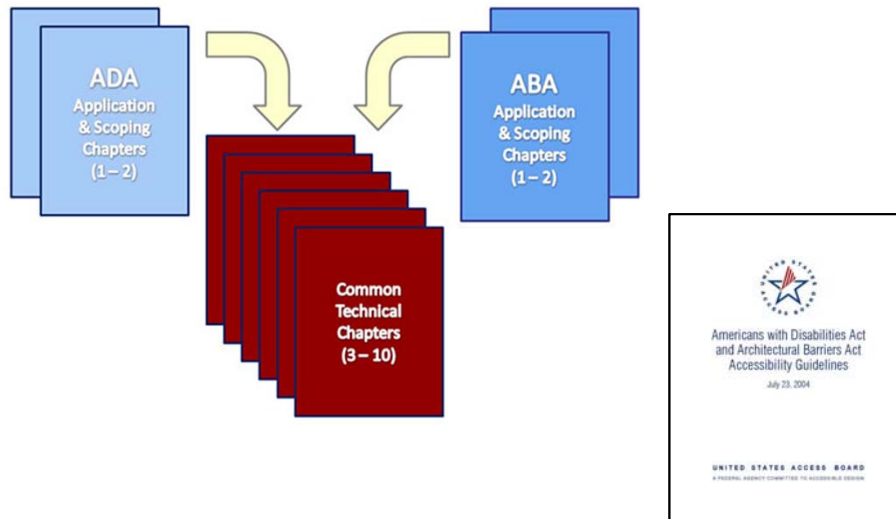
## Architectural Barriers Act

**Covers:**

- **facilities that are designed, constructed, altered, or leased by, or on behalf of the United States**
- **facilities receiving certain types of Federal Financial assistance.**

18

## 2004 ADA-ABA Guidelines



19

## ABA Standards (“F”)

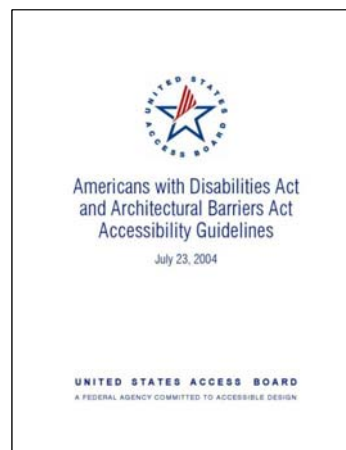
**F206 Accessible Routes**

**F219 Assistive Listening Systems**

**F221 Assembly Areas**

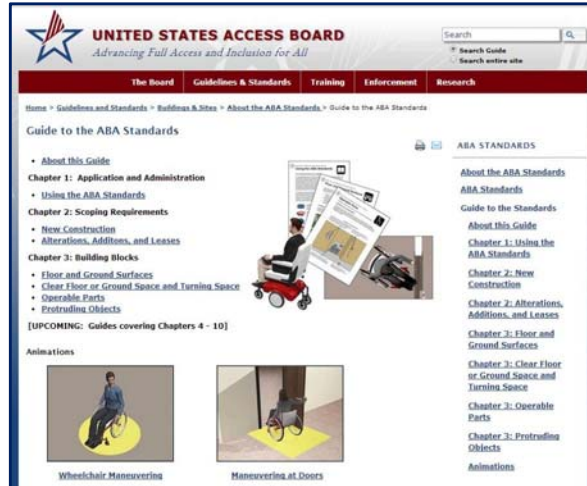
**706 Assistive Listening Systems**

**802 Wheelchair Spaces, Companion Seats, Designated Aisle Seats**



20

# Access Board Online Guidance



[www.access-board.gov/guidelines-and-standards](http://www.access-board.gov/guidelines-and-standards)

# Department of Justice Online Guidance



[www.ADA.gov](http://www.ADA.gov)

22

## 106.5 Defined Terms

### Assembly Area:

**“A building or facility, or portion thereof, used for the purpose of entertainment, educational or civic gatherings, or similar purposes.”**



23

## Examples of Assembly Areas

- classrooms
- lecture halls
- courtrooms
- public meeting rooms
- legislative chambers
- motion picture houses
- auditoria
- theaters
- playhouses
- dinner theaters
- concert halls
- amphitheaters
- arenas
- stadiums
- grandstands
- convention centers

24

# Assistive Listening Systems

25

## Assistive Listening Systems

**Required where (219.2):**

- **audible communication integral to use of space**
- **where no audio amplification exception**
- **courtrooms do not get exception**



**Not triggered by fixed seating or occupant load**

26

# Assistive Listening Systems

## 219.3 Receivers

Table 219.3 Receivers for Assistive Listening Systems

Capacity of Seating in Assembly Area	Minimum Number of Required Receivers	Minimum Number of Required Receivers Required to be Hearing-aid Compatible
50 or less	2	2
51 to 200	2, plus 1 per 25 seats over 50 seats <sup>1</sup>	2
201 to 500	2, plus 1 per 25 seats over 50 seats <sup>1</sup>	1 per 4 receivers <sup>1</sup>
501 to 1000	20, plus 1 per 33 seats over 500 seats <sup>1</sup>	1 per 4 receivers <sup>1</sup>
1001 to 2000	35, plus 1 per 50 seats over 1000 seats <sup>1</sup>	1 per 4 receivers <sup>1</sup>
2001 and over	55 plus 1 per 100 seats over 2000 seats <sup>1</sup>	1 per 4 receivers <sup>1</sup>

1. Or fraction thereof.

# Assistive Listening Systems

## 706 Technical Provisions



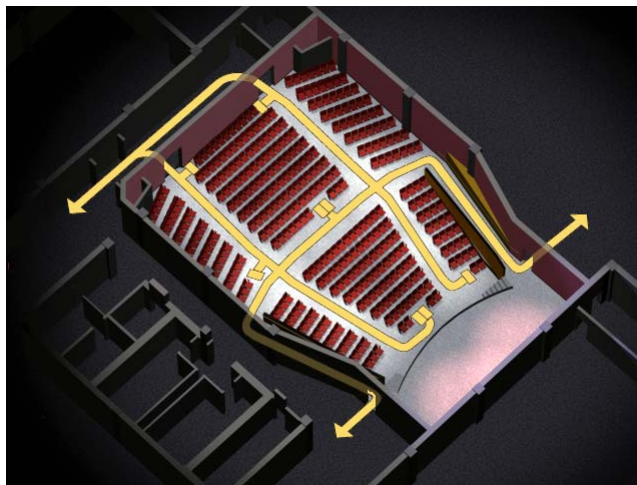
- Receiver Jacks
- Receiver Hearing-Aid Compatibility
- Sound Pressure Level
- Signal-to-Noise Ratio
- Peak Clipping Level

28

# Accessible Routes

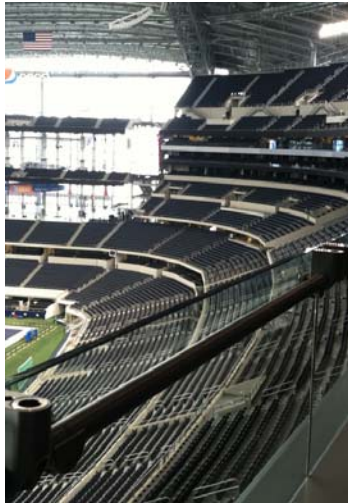
29

## Accessible Routes 206.2.4 Spaces and Elements



30

## 206.2.4 Spaces and Elements



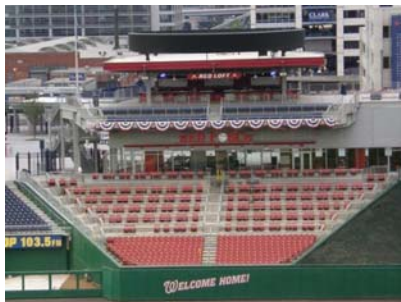
### Exception 2:

An accessible route is not required to serve fixed seating where there are no required wheelchair spaces complying with 221

31

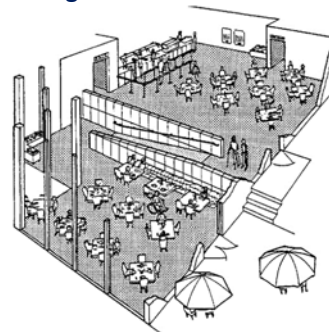
## 206.2.5 Restaurants and Cafeterias

**206.2.5, Exception 3**  
Tiered dining area providing seating required to comply with 221 and each tier with the same services



At least 25 percent of the dining area shall be on an accessible route

**206.2.5**  
Multi-level restaurant with dining tables and chairs



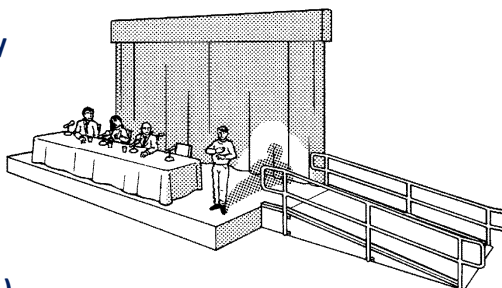
All dining levels shall be connected by an accessible route, including raised or sunken, and outdoor dining areas

32



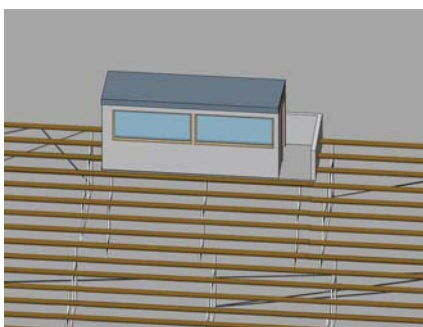
## 206.2.6 Performance Areas

- Accessible route required where circulation path directly connects a seating area to performance area
- Accessible route to ancillary areas or facilities used by performers
- Platform lifts permitted to provide accessible route to performance areas and speakers platforms (206.7.1)

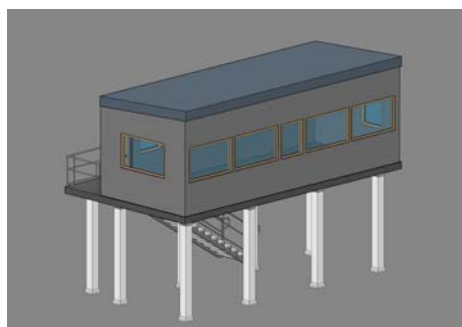


33

## 206.2.7 Press Boxes Exceptions



**Bleachers:**  
entry at only one level –  
aggregate area of all press  
boxes 500 square feet max



**Free Standing:**  
Above grade 12 feet min. –  
aggregate area of all press  
boxes 500 square feet max

34

## 221.5 Lawn Seating

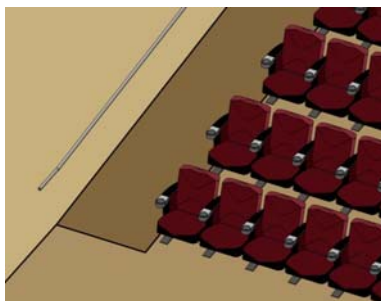


Photo Source Fairfax County Economic Development Authority

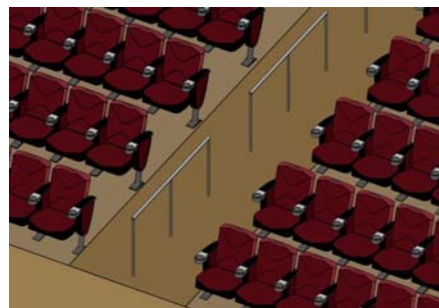
**Access Route to lawn seating and exterior overflow seating areas where fixed seats are not provided**

35

## Handrails Exceptions for 505.2 and 505.3



**not required on  
both sides**



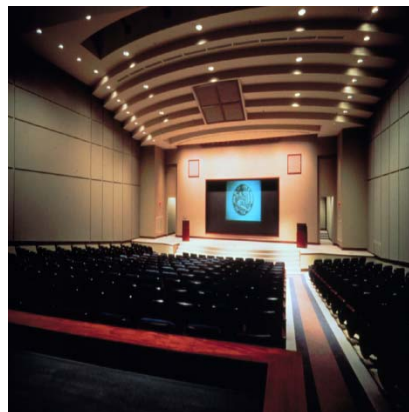
**not required to be  
continuous in aisles  
serving seating**

36

# Wheelchair Spaces

37

## Variety of Size and Types of Spaces



38

# Wheelchair Spaces

## 221.2.1.1 Number and Location

Total Seating	Minimum Wheelchair Spaces
4 to 25	1
26 to 50	2
51 to 150	4
151 to 300	5
301 to 500	6
501 to 5000	6 + 1 for each 150 over 501
5001 and over	36 + 1 for each 200 over 5000

39

# Wheelchair Spaces

## 221.2.1.1 Small Assembly Areas

### 1991 Standards

capacity 51 to 300  
4 wheelchair spaces

### 2010 Standards

capacity 151 to 300  
5 wheelchair spaces



40

# Wheelchair Spaces

## 221.2.1.1 Large Assembly Areas



41

# Wheelchair Spaces

## 221.2.1.1 Large Assembly Areas

### 1991 Standards

capacity 501 or more

1 percent +1

wheelchair spaces

### 2010 Standards

capacity 501 - 5000

6 + 1 for each 150

capacity 5001 or more

36 + 1 for each 200

42

## **Maintenance of Accessible Features § 35.133(c); § 36.211(c)**

**If the 2010 Standards reduce the technical requirements or the number of required accessible elements below the number required by the 1991 Standards, the technical requirements or the number of accessible elements in a facility subject to this part may be reduced in accordance with the requirements of the 2010 Standards..**

43

## **Wheelchair Spaces**



### **221.2.1.2 Luxury Boxes, Club Boxes and Suites**

**Calculated  
box by box and  
suite by suite**

44

# Wheelchair Spaces

## 221.2.1.3 Other Boxes



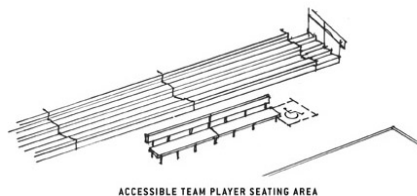
Tiered boxes designed for spatial or acoustical purposes

20 percent of the **total seats** in all boxes

45

# Wheelchair Spaces

## 221.2.1.4 Team and Player Seating



**At least one wheelchair space shall be provided**

46



# Wheelchair Spaces

**35.151(g)(3) and 36.406(f)(3)**

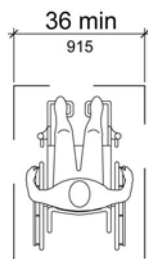


**When wheelchair spaces are not used, individual removable seats may be placed in those spaces**

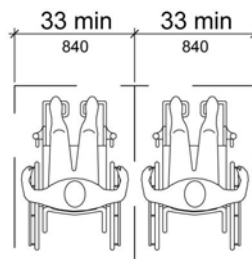
47

# Wheelchair Spaces

**802.1.2 Width**



(a)  
single space



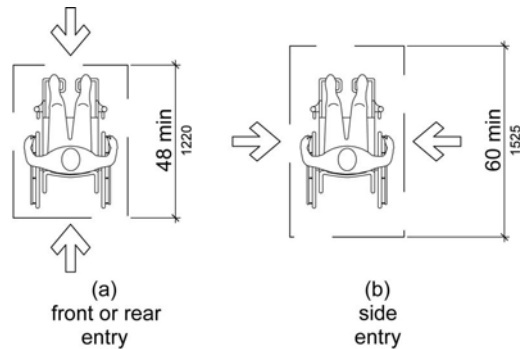
(b)  
two spaces

48



# Wheelchair Spaces

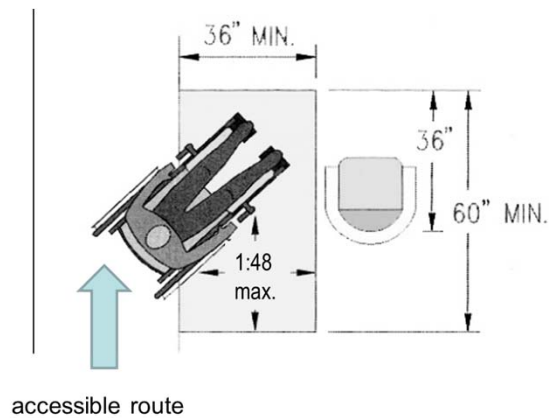
## 802.1.3 Depth



49

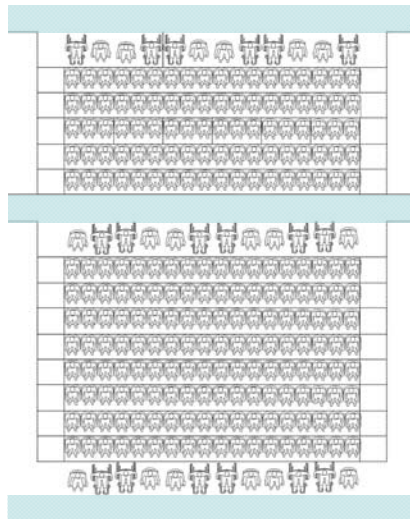
# Wheelchair Spaces

## 802.1.4 Approach



50

# Wheelchair Spaces

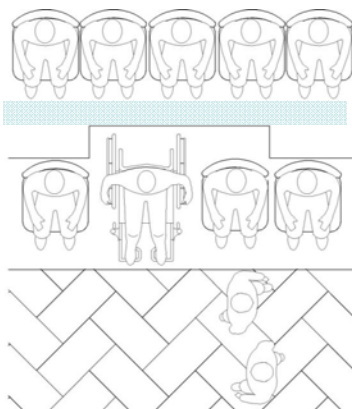


## 802.1.4 Approach

Accessible routes shall not overlap wheelchair spaces

51

# Wheelchair Spaces



## 802.1.5 Overlap

Wheelchair spaces shall not overlap circulation paths

aisle width required by applicable building or life safety code

52

# Companion Seats

53

## Companion Seats

### 221.3 Number

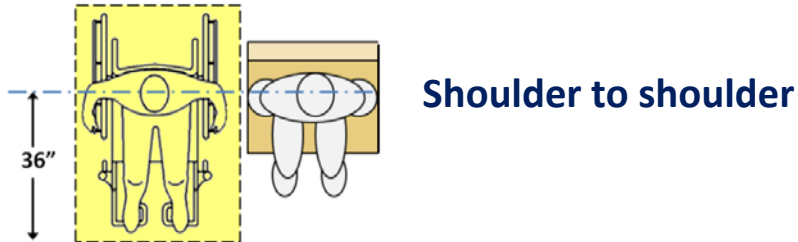


**At least one  
companion seat  
for each  
wheelchair space**

54

# Companion Seats

## 802.3.1 Alignment



55

# Companion Seats

## 802.3.1 Alignment



56

## Companion Seats

### 802.3.2 Type



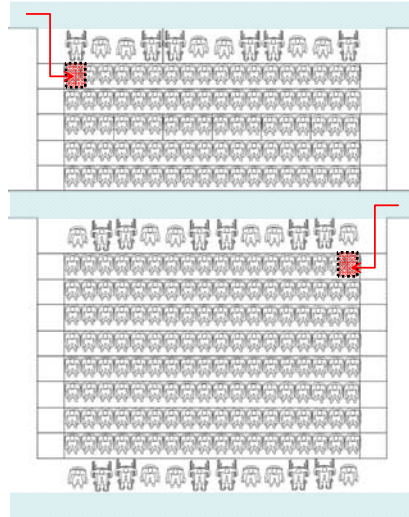
**Equivalent in size, comfort, quality and amenities**  
**Permitted to be moveable**

57

## Designated Aisle Seats

58

## Designated Aisle Seats



### 221.4 Number and Location

5 percent of the total number of aisle seats

Located closest to accessible routes

59

## Designated Aisle Seats

### 802.4 Armrests and Identification

Folding or retractable armrests on aisle side of seat

Identified by a sign or marker



60

# Integration and Dispersion

61

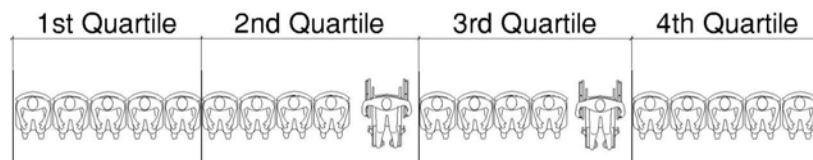
## Horizontal Dispersion

### 221.2.3.1

**Wheelchair spaces shall be dispersed horizontally**

**Exception:**

**300 seats or less if wheelchair spaces & companion seats are located in the 2<sup>nd</sup> or 3<sup>rd</sup> quartile of row**

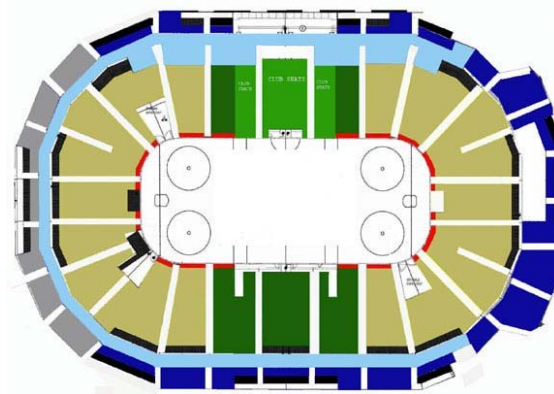


62

# Horizontal Dispersion

**35.151(g)(2) or 36.406 (f)(2)**

**Around the field of play or performance area**



63

# Vertical Dispersion

**221.2.3.2**



**Wheelchair spaces shall be dispersed vertically at varying distances from the screen, performance area or playing field.**

## **Exception 1**

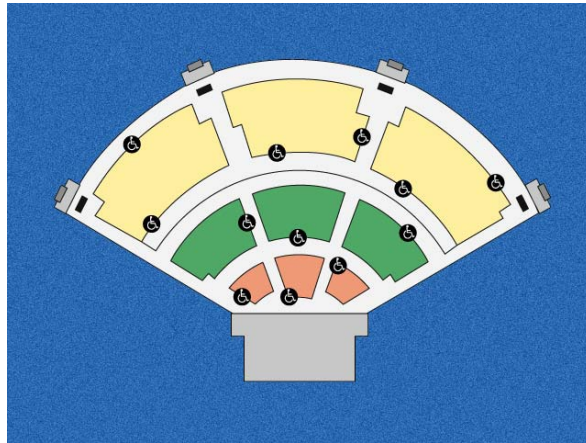
**300 seats or less if viewing angles are equivalent**

64



# Vertical Dispersion

## 221.2.3.2

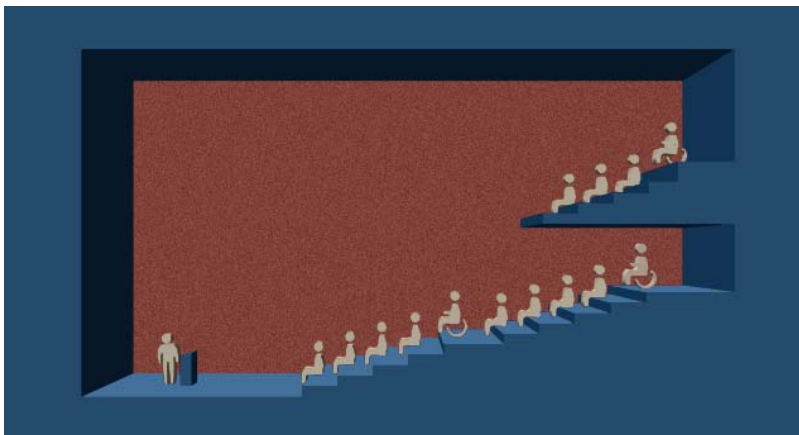


At varying distances from the screen, performance area, or playing field

65

# Vertical Dispersion

In each balcony or mezzanine that is located on an accessible route



66

## Vertical Dispersion



### 221.2.3.2

#### Exception 2:

**In bleachers, wheelchair spaces shall not be required to be provided in rows other than rows at points of entry to bleacher seating.**

However, choose entry points that will provide wheelchair spaces with viewing angles that are substantially equivalent to or better than those of all other spectators.

67

## Lines of Sight

68

## Line of Sight Over Seated Spectators

### 802.2.1

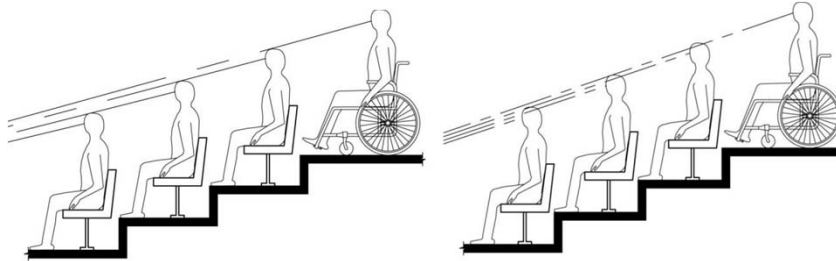


Figure 802.2.1.1  
Line of Sight Over Heads

Figure 802.2.1.2  
Line of Sight Between Heads

69

## Line of Sight Over Standing Spectators

### 802.2.2

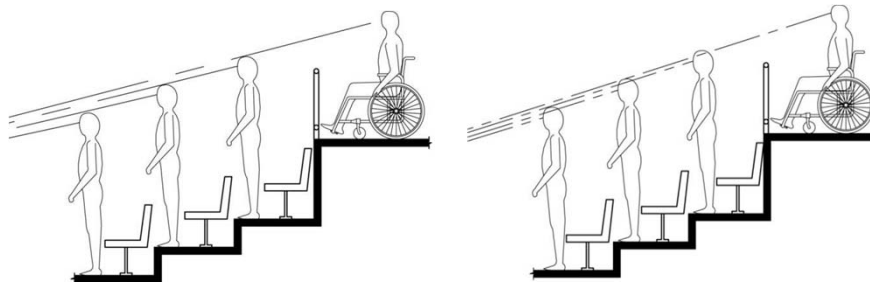


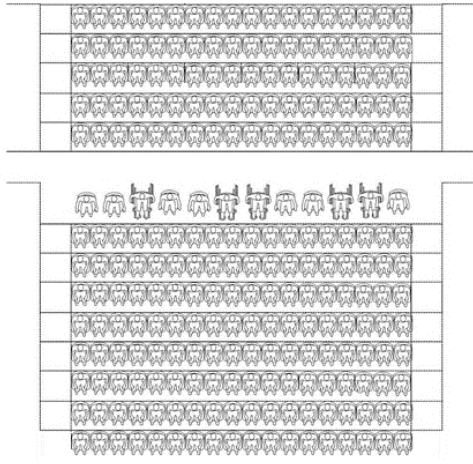
Figure 802.2.2.1  
Line of Sight Over Heads

Figure 802.2.2.2  
Line of Sight Between Heads

70

## Stadium Style Movie Theaters

35.151(g)(4) or 36.406(f)(4)



Located on a riser or cross-aisle in the stadium section

- within the rear 60%
- with vertical viewing angles (as measured to the top of the screen) from the 40th to the 100th percentile

71

## Removable Seats and Platforms

72

## Platforms

### 35.151(g)(3) and 36.406(f)(3)



Wheelchair spaces and companion seats are not located on (or obstructed by) temporary platforms or other movable structures

73

# Questions?

74



## **U.S. Department of Justice**

**(800) 514-0301 (voice)**

**(800) 514-0383 (TTY)**

**[www.ada.gov](http://www.ada.gov)**

75



## **U.S. Access Board**

**(800) 872-2253 (voice)**

**(800) 993-2822 (TTY)**

**E-mail: [ta@access-board.gov](mailto:ta@access-board.gov)**

**[www.access-board.gov](http://www.access-board.gov)**

*"Advancing Full Access and Inclusion for All"*

76



## Continuing Education



**AIA Provider Number:** I017

**LA CES Provider Name:** Great Lakes ADA Center

**AICP Provider Name:** Great Lakes ADA Center



**Course Title:** Accessible Assembly Areas

**Course Number:** GL20140605

**Date:** June 5<sup>th</sup>, 2014



Credits earned on completion of this course will be reported to **AIA CES** for AIA members and **LA CES** for those with an LA number. Certificates of Completion are available upon request.

This course is registered with **AIA, LA CES, and AICP** for continuing professional education. As such, it does not include content that may be deemed or construed to be an approval or endorsement by the professional organizations of any material of construction or any method or manner of handling, using, distributing, or dealing in any material or product.

Questions will be addressed at the conclusion of this presentation.

77

## Thank you for participating in today's webinar



**Next session:**

**July 10, 2014**

**"Accessible Toilet and Bathing Facilities -  
Advanced Session"**

**[www.accessibilityonline.org](http://www.accessibilityonline.org)**

**(877) 232-1990 (v/TTY)**

78